

## Concealed wall elbow -

---

35 085 970 90



- red brass, lead-free
- female thread 1/2" connection
- 1x female thread 1/2" outlet
- dust cover
- anti-water packing
- soundproofing

**For wall-mounted spouts and wall outlet elbows with 1/2" connection.**

For wall-mounted spouts and wall outlet elbows with 1/2" connection.

## Required miscellaneous

---



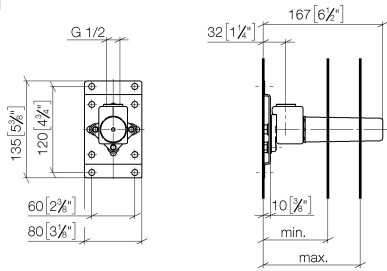
**Drybox Concealed thermostat - XS-09 0728**

- Overflow is part of the scope of delivery.

**Concealed wall elbow -**

35 085 970 90

mm [inches]



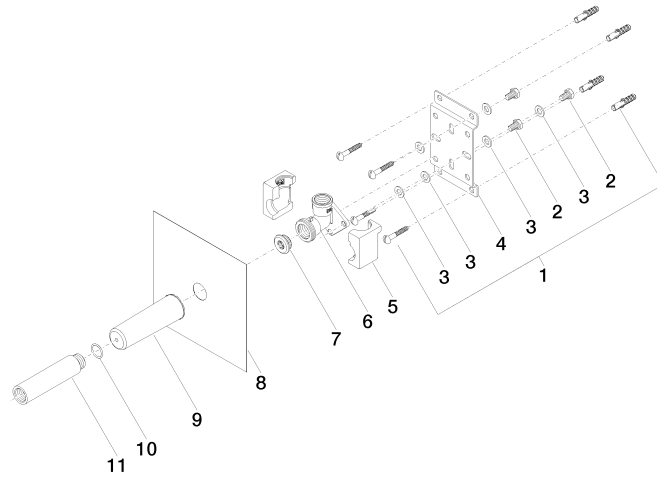
|           | min         | max          |
|-----------|-------------|--------------|
| CL. 1     | 90 [3 1/2"] | 163 [6 3/8"] |
| CL. 2     | 68 [2 5/8"] | 135 [5 3/8"] |
| Domicil   | 90 [3 1/2"] | 163 [6 3/8"] |
| Gentle    | 90 [3 1/2"] | 163 [6 3/8"] |
| IMO       | 90 [3 1/2"] | 163 [6 3/8"] |
| Lissé     | 90 [3 1/2"] | 163 [6 3/8"] |
| MEM       | 90 [3 1/2"] | 163 [6 3/8"] |
| Symetrics | 90 [3 1/2"] | 163 [6 3/8"] |
| Vaia      | 90 [3 1/2"] | 163 [6 3/8"] |

**Certificates**

WRAS\_1904021. LGA\_29336.

**Concealed wall elbow -**

35 085 970 90



**Spare parts list**

| No. | Item Number        | Name        | Quantity used | Delivery time |
|-----|--------------------|-------------|---------------|---------------|
| 1   | 04 30 31 024 01 90 | fixing set  | 2             | 2             |
| 2   | 09 30 30 152 90    | screw       | 3             | 2             |
| 3   | 09 30 11 139 90    | disc        | 6             | 2             |
| 4   | 09 17 20 094 90    | holder      | 1             | 2             |
| 5   | 09 11 11 036 90    | accessories | 1             | 2             |
| 6   | 09 11 03 041 10 90 | connection  | 1             | 2             |
| 7   | 04 31 20 006 00 90 | plug        | 1             | 2             |
| 8   | 04 14 03 072 01 90 | gasket kit  | 1             | 2             |
| 9   | 09 21 02 102 90    | cap         | 1             | 2             |
| 10  | 90 14 10 010 00 90 | seal        | 1             | 2             |
| 11  | 09 24 03 169 10 90 | adaptor     | 1             | 2             |